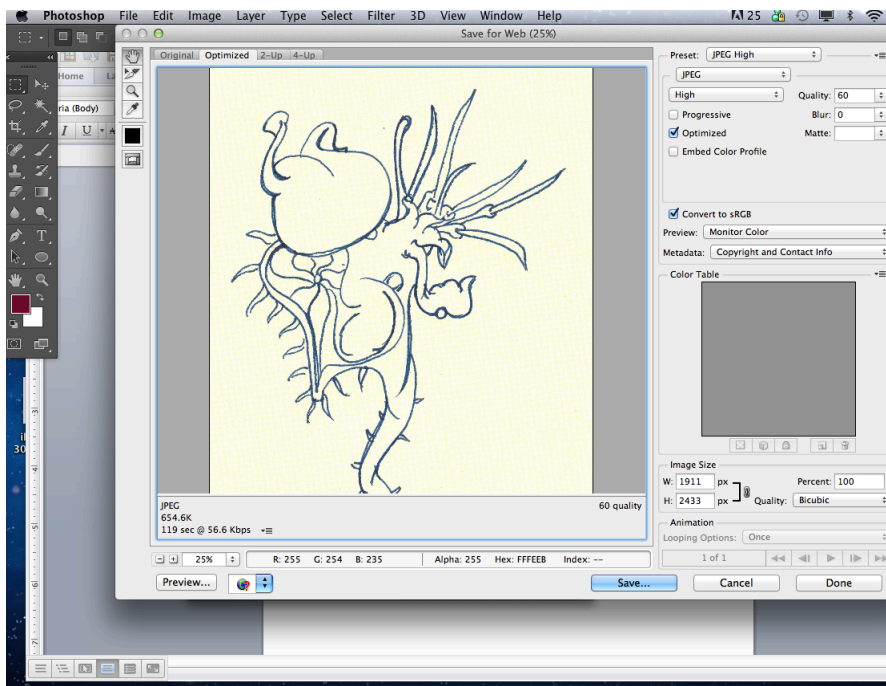
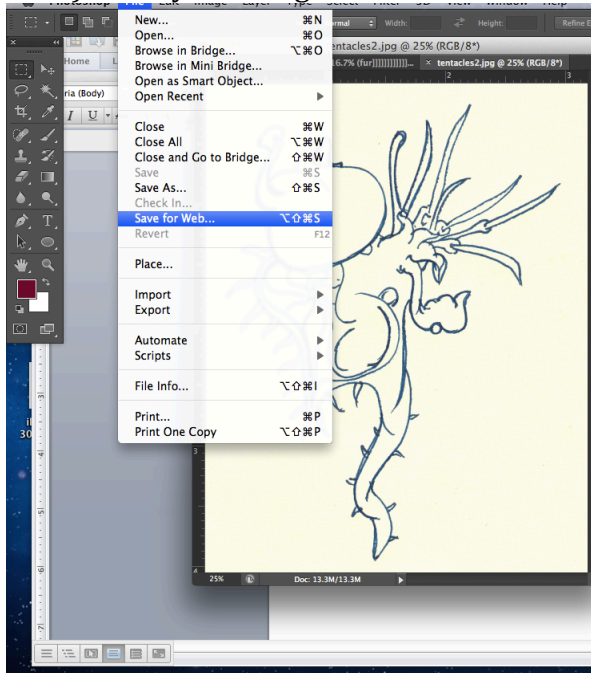


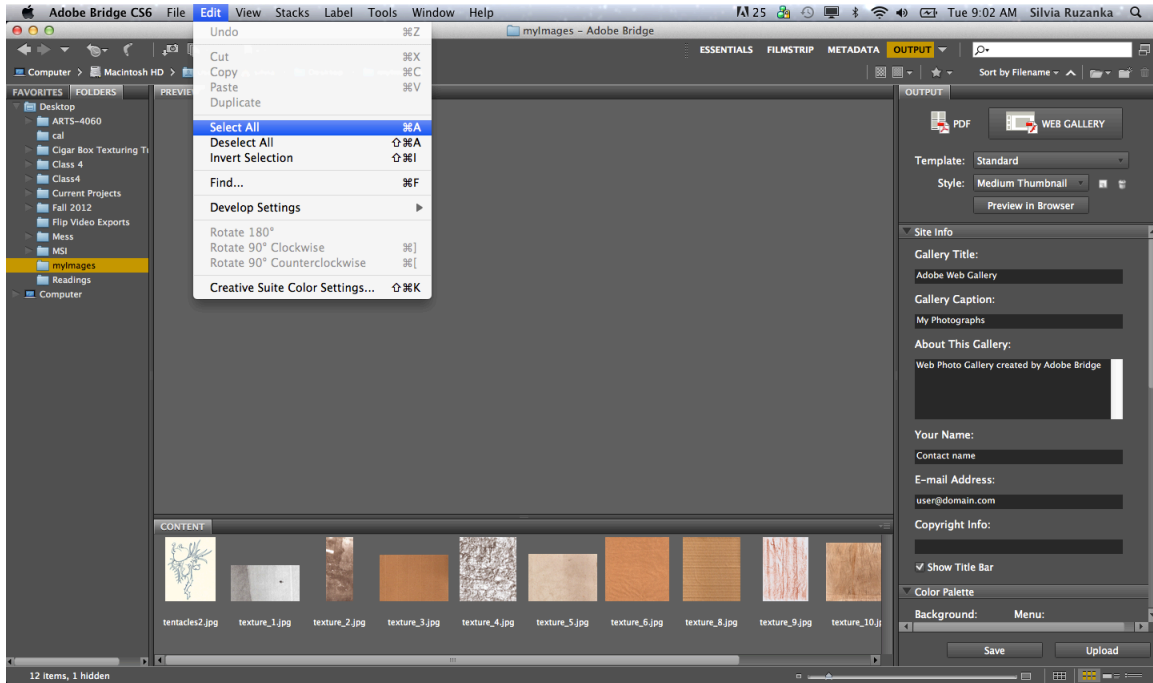
Creating a Web Portfolio using Adobe Bridge:

1) Save your image for the Web



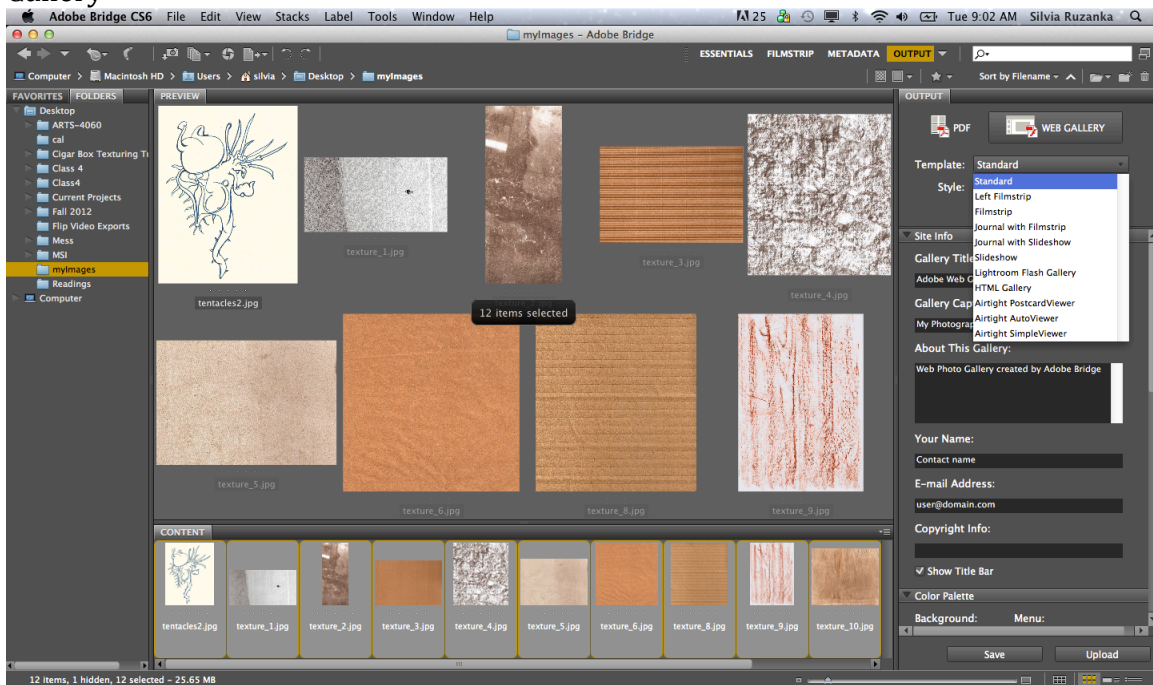
Save these images into a new folder.

2) Open Adobe Bridge

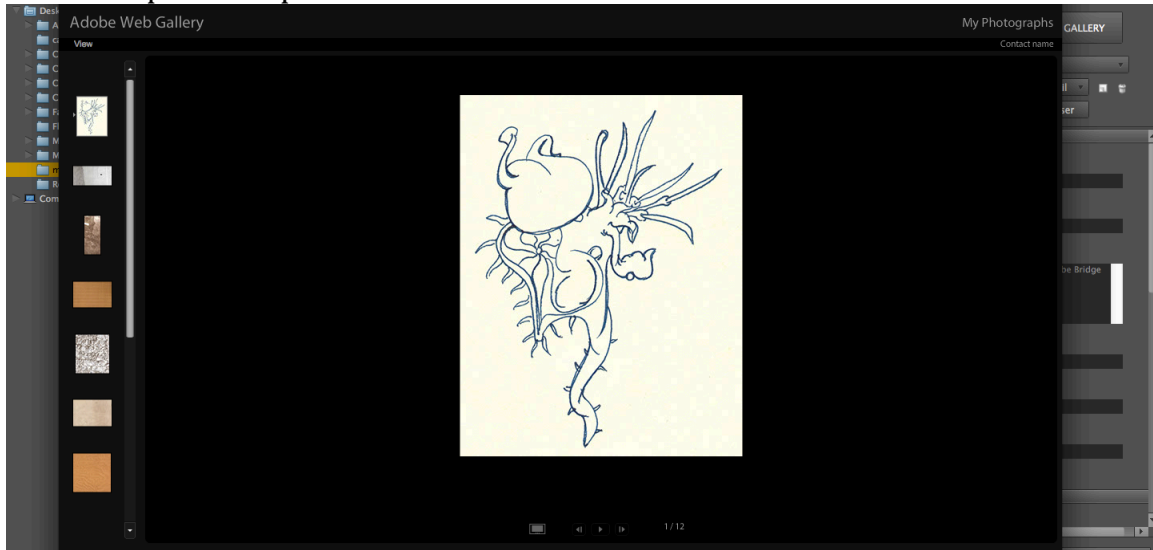


Select the folder that holds you images, then select all the images

3) Make sure you have Output selected. Go to the output panel and select Web Gallery



Pick a template and preview



4) Customize and write-up a short description of the concepts for your projects. Save! Bridge will create a folder using the Gallery Name. This will have your portfolio in it. Upload this folder to the HASS server.

